

## Construction Market Forecast and Subcontractor/Supply Chain Pulse

### Labor Department Projects Construction Job Growth Over Next Decade

The Bureau of Labor Statistics recently released its annual employment projections, predicting a 0.5% growth rate for construction jobs from 2023 to 2033, compared to 0.1% for all industries. This is an improvement over last year's projected 0.1% for construction from 2022 to 2032, according to Ken Simonson of the Associated General Contractors of America.

The report forecasts a 6.3% increase, or 238,900 new jobs, for construction trades workers over the next decade. Simonson highlighted the importance of government support for career and technical education to prepare workers for these roles.



The new projections underscore the urgency of having government support for career and technical education and training programs that will prepare workers to fill these opportunities.

*- Ken Simonson, Associated General Contractors of America Chief Economist*

[Source and Hyperlink:](#)

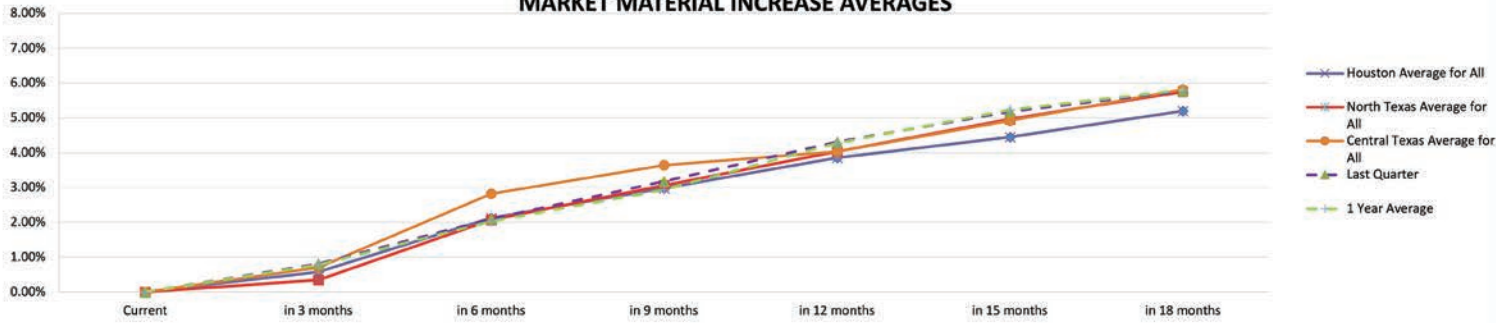
[ENR News: August 30, 2024](#)

<https://www.enr.com/articles/print/59222-labor-dept-projects-10-year-gain-for-construction-employment>

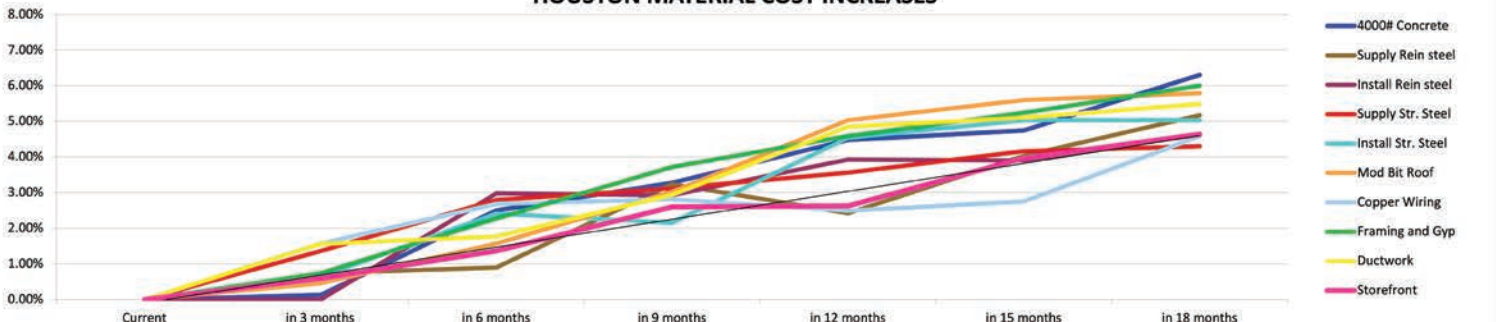


MD Anderson Cancer Center ioMRI Robot Row Houston, TX

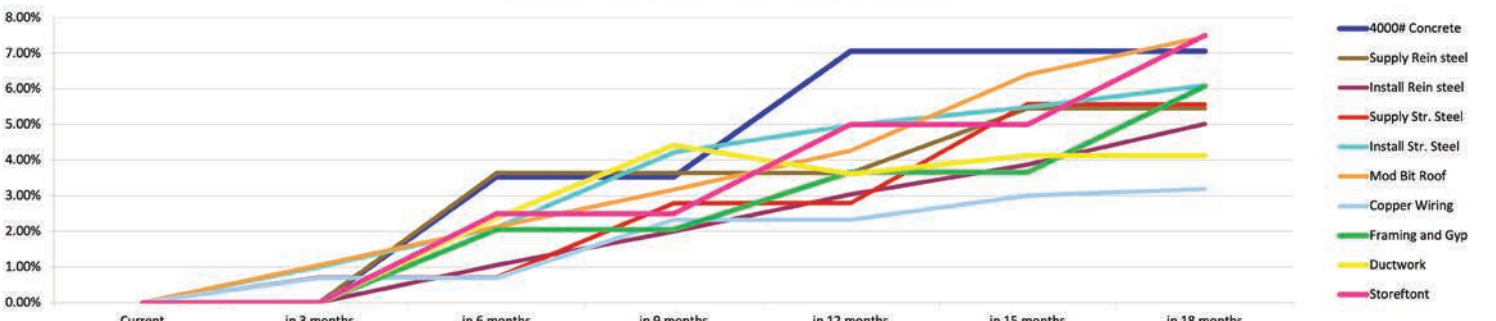
## MARKET MATERIAL INCREASE AVERAGES



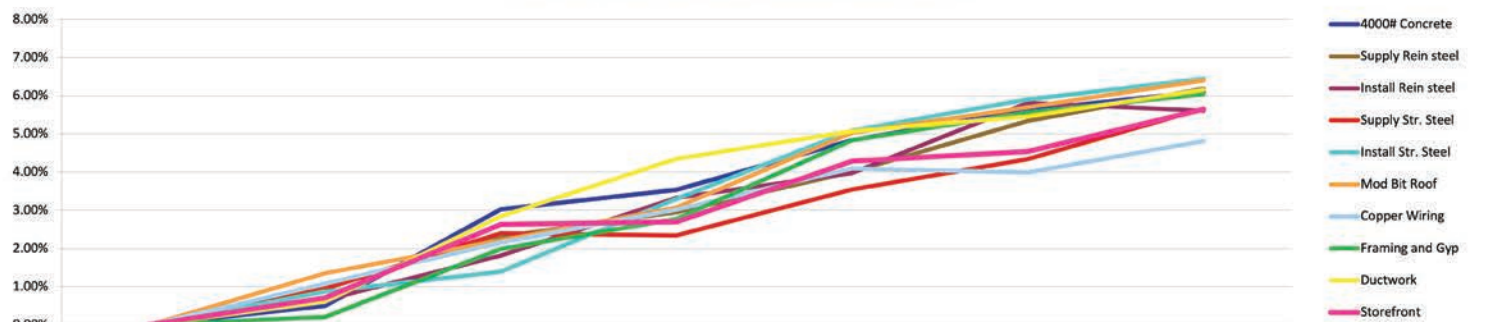
## HOUSTON MATERIAL COST INCREASES



## NORTH TEXAS MATERIAL COST INCREASES



## CENTRAL TEXAS MATERIAL COST INCREASES



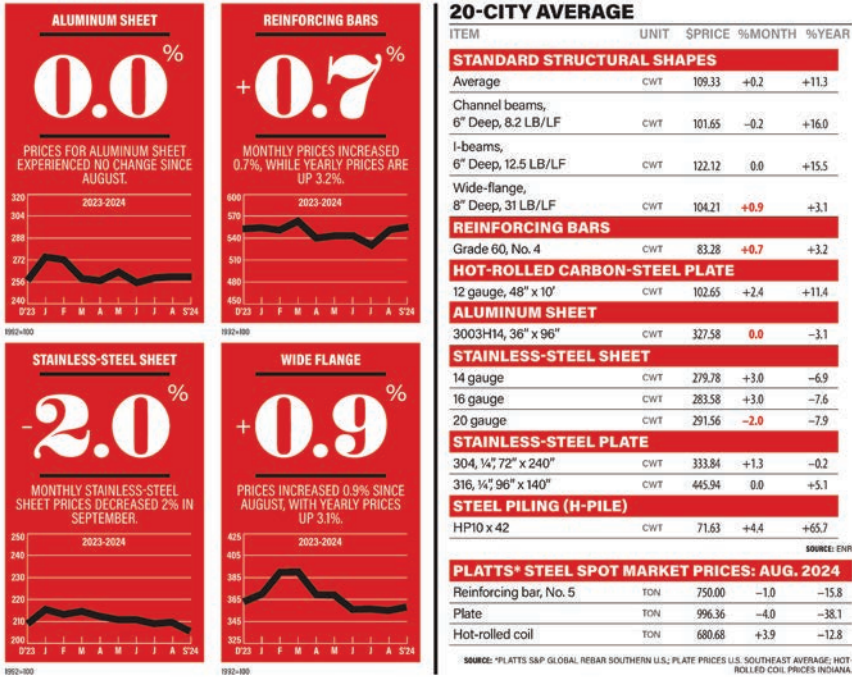
## Aluminum Prices Rise 1.4% in July; Mixed Trends for Steel in September

Aluminum sheet prices rose 1.4% in July, following a 1.6% increase in June, as reported by the Bureau of Labor Statistics' producer price index. The annual index reached 7.2% in July, up from 4.2% the previous month. According to ENR, the average monthly price for reinforcing

bars in 20 cities increased by 0.7% in September, with a year-over-year rise of 3.2%. Hot-rolled carbon-steel plate saw a monthly price jump of 2.4% in September. In contrast, all types of stainless-steel sheet experienced annual price declines during the same month.



### ENR's Materials Prices For September 2024



enr.com September 30, 2024 • ENR • 69

Source and Hyperlink:  
ENR: September 30, 2024

<https://www.enr.com/articles/59338-construction-economics-for-september-30-2024>



Texas Christian University Burnett School of Medicine  
Topping-Out Ceremony Fort Worth, TX



Southwestern University  
Mood-Bridwell Hall Georgetown, TX

Supply Reinforcing Steel \$\$/TON						
Timeframe	HTX		NTX		CTX	
	\$/LB	Delta	\$/LB	Delta	\$/LB	Delta
Current	\$1,253	0.00%	\$1,100	0.00%	\$1,192	0.00%
3 months	\$1,262	0.73%	\$1,100	0.00%	\$1,204	1.00%
6 months	\$1,264	0.90%	\$1,140	3.64%	\$1,220	2.31%
9 months	\$1,294	3.24%	\$1,140	3.64%	\$1,227	2.95%
12 months	\$1,283	2.42%	\$1,140	3.64%	\$1,240	4.01%
15 months	\$1,304	4.03%	\$1,160	5.45%	\$1,256	5.34%
18 months	\$1,318	5.18%	\$1,160	5.45%	\$1,266	6.18%

Install Reinforcing Steel \$\$/TON						
Timeframe	HTX		NTX		CTX	
	\$/LB	Delta	\$/LB	Delta	\$/LB	Delta
Current	\$513	0.00%	\$505	0.00%	\$511	0.00%
3 months	\$513	0.73%	\$505	0.01%	\$515	0.65%
6 months	\$528	0.90%	\$510	1.05%	\$521	1.81%
9 months	\$528	3.24%	\$515	1.99%	\$528	3.32%
12 months	\$533	2.42%	\$520	3.04%	\$532	3.98%
15 months	\$533	4.03%	\$525	3.87%	\$541	5.81%
18 months	\$536	5.18%	\$530	5.02%	\$540	5.61%

Supply Structural Steel \$\$/TON						
Timeframe	HTX		NTX		CTX	
	\$/LB	Delta	\$/LB	Delta	\$/LB	Delta
Current	\$3,500	0.00%	\$3,600	0.00%	\$3,767	0.00%
3 months	\$3,548	1.36%	\$3,625	0.71%	\$3,802	0.94%
6 months	\$3,598	2.80%	\$3,625	0.70%	\$3,857	2.40%
9 months	\$3,609	3.12%	\$3,700	2.78%	\$3,855	2.34%
12 months	\$3,625	3.57%	\$3,700	2.80%	\$3,900	3.54%
15 months	\$3,646	4.16%	\$3,800	5.57%	\$3,930	4.34%
18 months	\$3,651	4.30%	\$3,800	5.57%	\$3,980	5.66%

Install of Structural Steel \$\$/TON						
Timeframe	HTX		NTX		CTX	
	\$/LB	Delta	\$/LB	Delta	\$/LB	Delta
Current	\$1,618	0.00%	\$1,886	0.00%	\$1,738	0.00%
3 months	\$1,629	0.64%	\$1,904	1.00%	\$1,754	0.87%
6 months	\$1,657	2.42%	\$1,925	2.10%	\$1,763	1.39%
9 months	\$1,653	2.16%	\$1,965	4.22%	\$1,796	3.30%
12 months	\$1,692	4.54%	\$1,979	4.98%	\$1,827	5.08%
15 months	\$1,700	5.04%	\$1,989	5.48%	\$1,841	5.90%
18 months	\$1,700	5.04%	\$2,000	6.09%	\$1,850	6.44%

Copper Wire \$\$/LB						
Timeframe	HTX		NTX		CTX	
	\$/LB	Delta	\$/LB	Delta	\$/LB	Delta
Current	\$4.44	0.00%	\$4.30	0.00%	\$4.66	0.00%
3 months	\$4.50	1.57%	\$4.33	0.70%	\$4.71	1.08%
6 months	\$4.55	2.69%	\$4.33	0.70%	\$4.76	2.15%
9 months	\$4.56	2.82%	\$4.40	2.33%	\$4.80	3.02%
12 months	\$4.55	2.49%	\$4.40	2.33%	\$4.85	4.09%
15 months	\$4.56	2.75%	\$4.43	3.00%	\$4.85	3.99%
18 months	\$4.64	4.59%	\$4.44	3.19%	\$4.88	4.81%

Frame and Gyp \$\$/SF						
Timeframe	HTX		NTX		CTX	
	\$/LB	Delta	\$/LB	Delta	\$/LB	Delta
Current	\$9.50	0.00%	\$6.62	0.00%	\$7.76	0.00%
3 months	\$9.57	0.73%	\$6.62	0.00%	\$7.77	0.21%
6 months	\$9.72	2.28%	\$6.76	2.05%	\$7.91	1.99%
9 months	\$9.86	3.72%	\$6.76	2.05%	\$7.97	2.77%
12 months	\$9.94	4.59%	\$6.86	3.66%	\$8.13	4.84%
15 months	\$10.00	5.25%	\$6.86	3.66%	\$8.19	5.57%
18 months	\$10.07	6.00%	\$7.02	6.07%	\$8.22	6.04%

Mod Bit Roofing* \$\$/SF						
Timeframe	HTX		NTX		CTX	
	\$/LB	Delta	\$/LB	Delta	\$/LB	Delta
Current	\$20.87	0.00%	\$23.50	0.00%	\$22.12	0.00%
3 months	\$20.97	0.46%	\$23.75	1.06%	\$22.42	1.35%
6 months	\$21.20	1.57%	\$24.00	2.13%	\$22.61	2.21%
9 months	\$21.51	3.02%	\$24.25	3.17%	\$22.80	3.07%
12 months	\$21.92	5.03%	\$24.50	4.27%	\$23.24	5.03%
15 months	\$22.04	5.60%	\$25.00	6.40%	\$23.38	5.69%
18 months	\$22.08	5.79%	\$25.25	7.46%	\$23.54	6.41%

\* 20,000 SF Roof W/4-Inch ISO

Ductwork \$\$/LB						
Timeframe	HTX		NTX		CTX	
	\$/LB	Delta	\$/LB	Delta	\$/LB	Delta
Current	\$9.76	0.00%	\$9.17	0.00%	\$9.58	0.00%
3 months	\$9.91	1.56%	\$9.17	0.00%	\$9.64	0.61%
6 months	\$9.93	1.77%	\$9.38	2.38%	\$9.86	2.85%
9 months	\$10.04	2.94%	\$9.57	4.42%	\$10.00	4.35%
12 months	\$10.23	4.85%	\$9.50	3.60%	\$10.07	5.07%
15 months	\$10.26	5.10%	\$9.54	4.13%	\$10.11	5.46%
18 months	\$10.29	5.49%	\$9.54	4.13%	\$10.17	6.15%

4000# Concrete \$\$/CY						
Timeframe	HTX		NTX		CTX	
	\$/LB	Delta	\$/LB	Delta	\$/LB	Delta
Current	\$151.33	0.00%	\$170.00	0.00%	\$165.50	0.00%
3 months	\$151.52	0.12%	\$170.00	0.00%	\$166.33	0.50%
6 months	\$155.12	2.50%	\$176.00	3.53%	\$170.50	3.02%
9 months	\$156.29	3.27%	\$176.00	3.53%	\$171.35	3.54%
12 months	\$158.11	4.48%	\$182.00	7.06%	\$173.50	4.83%
15 months	\$158.52	4.75%	\$182.00	7.06%	\$174.80	5.62%
18 months	\$160.88	6.31%	\$182.00	7.06%	\$175.62	6.11%

Storefront \$\$/SF						
Timeframe	HTX		NTX		CTX	
	\$/LB	Delta	\$/LB	Delta	\$/LB	Delta
Current	\$91.25	0.00%	\$100.00	0.00%	\$95.00	0.00%
3 months	\$91.79	0.59%	\$100.00	0.00%	\$95.67	0.70%
6 months	\$92.50	1.37%	\$102.50	2.50%	\$97.50	2.63%
9 months	\$93.63	2.60%	\$102.50	2.50%	\$100.13	2.70%
12 months	\$93.65	2.62%	\$105.00	5.00%	\$99.07	4.29%
15 months	\$94.87	3.97%	\$105.00	5.00%	\$99.31	4.53%
18 months	\$95.48	4.64%	\$107.50	7.50%	\$100.36	5.64%

The information provided in Linbeck's Quarterly Construction Market Forecast and Subcontractor/Supply Chain Pulse is gathered from numerous local and national suppliers every quarter to provide our clients with up-to-date market news.